



CHAMELEON WATERFALL



3D LIVE DISPLAY BLACK ICE



CURVED BLUE REFRESH (LD)



## TECHNICAL FEATURES & SPECIFICATIONS

V21 Model	621	721	821
Total Can Capacity	544	680	800
Total PET Bottle Capacity	240	300	360
# of Selections/Columns	8/8	10/10	10/10
<b>Dimensions* - H x W x D</b>			
Live Display Black Ice	N/A	72"x39.5"x35"	N/A
Live Display Blue Refresh	N/A	72"x39.5"x35"	79"x39.5"x35"
Chameleon Waterfall	72"x32.5"x35"	72"x39.5"x35"	79"x39.5"x35"
Shipping Weight*	570 lbs	660 lbs	725 lbs.
Operation Voltage	115v 60Hz	115v 60Hz	115v 60Hz
Amp Rating	8	8	8
Energy Consumption (DOE)	≤ 3.8 kWh/day	≤ 3.9 kWh/day	≤ 4.3 kWh/day
Lighting	LED	LED	LED
Refrigerant	R-134a	R-134a or R-290	R-134a or R-290
Lock Type	T-Handle	T-Handle	T-Handle
<b>Capacity per Column</b>			
12oz Can	68	68	80
20oz PET Bottle**	30	30	36

\* Dimensions and shipping weight will vary slightly.

\*\* Product capacities will vary based on the shape and size of the bottle.

No shims, spacers, gauge bars, gauge bar clips, or cams to adjust.

Vend-mechanisms are self-priming for additional time-savings at product set-up.: Simply move the back spacer, adjust the product slide and select the appropriate depth setting to set-up a column for a different vend product.

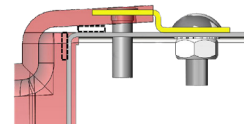
Slide out loading rack allows for greater access to the coulms during product loading.

Rugged top retainer ensures consistent product alignment every time the door is closed.

The V21's epoxy coated vend chute provides smooth product delivery.

\*\*\*Mounting brackets secured to the door frame with carriage bolts provide optimum security and ease of installation.

Permanent studs protrude through pre-drilled holes on the door frame to reduce vandalism and ensure the door is tamper resistant.



\*\*\*3D Live Display Black Ice only.



At SandenVendo America, we take our commitment to the environment very seriously. That's why we're proud to offer our full range of vending machines charged with R290 HC. R290 is a safe and abundant natural refrigerant with a zero Ozone Depleting Potential and a Global Warming Potential (GWP) of 3, compared to HFC - R134a's GWP of 1,300, so it's clear that R290 is the sustainable choice of the future.



ISO9001:2015, ISO1400:2015, ISO/IEC 17025:2005, and OSHAS 18001 certified.

- ADA compliant, UL certified, ENERGY STAR qualified, meets or exceeds DOE & EPA requirements.
- Energy management features included on every model make the V21 one of the most energy efficient machines available: LED lighting, real time clock, lighting and refrigeration controls, cyclopentane injected foam insulation (HFC free).
- Full function MDB controller with DEX/UCS, recycler and wireless telemetry compatibility standard on all models.
- The V21 stack allows for maximum flexibility during product loading and most products can be loaded caps to back, butt-to-butt, or in combination.
- The V21 utilizes 24 volt, DC motors that are installed with only two screws for easy servicing. No micro-switches or timing cams!
- The time tested V21 product delivery system design ensures reliable vending due to reduced sensitivity to package diameter and shape.

**SandenVendo America, Inc. offers a complete line of parts, accessories, supplies and add-on security devices - call or visit: [www.vendoco.com](http://www.vendoco.com) for more information.**



**West Coast Canada**  
4275A Phillips Ave.  
Burnaby, British Columbia  
V5A 2X4, Canada  
1 (800) 661-2205

**Manitoba & Central Canada**  
108 Woodbine Downs Blvd  
Toronto, Ontario  
M9W 5S6, Canada  
1 (800) 668-4802

**Quebec and Maritimes**  
8075 route Transcanadienne  
Saint-Laurent, Quebec  
H4S 1S4  
1 (888) 333-8456